

DESIGN PORTFOLIO



SBM
Designers | Engineers

MRA
Architect | Interior Groups

Designer : Rajesh

Engineer : Bala Murugan

Architect : Raj

Interior : Megha

Cell : +91 9841819747

Cell : +91 98418 28360

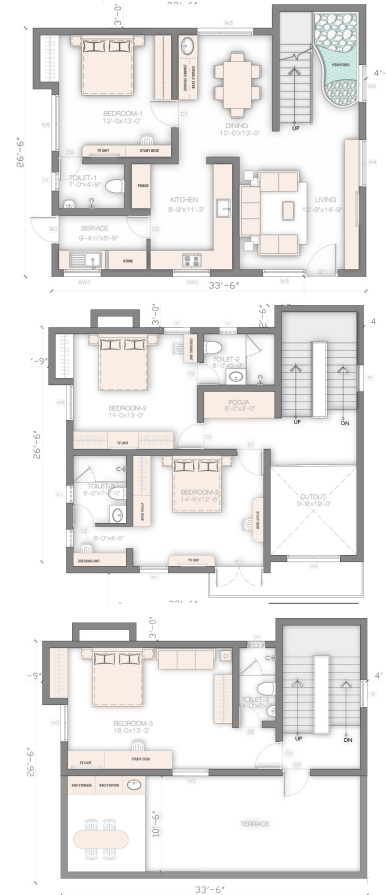
Cell : +65 83051296

Cell : +65 8617 0200

Residential Project - Mogappair Residence, Chennai



Specs - Ground + 2 Floors, 5 Bedroom bungalow
Timeline - 1 year (Design and construction)
Construction - SBM construction
Architect, Interior Design - MRA Architects



+85 8305 1298
+91 20209 44457
+91 80561 54494

MRA
Architecture | Interior
Groups



+85 8305 1298
+91 20209 44457
+91 80561 54494

MRA
Architecture | Interior
Groups



Residential Project - Mogappair Residence, Chennai



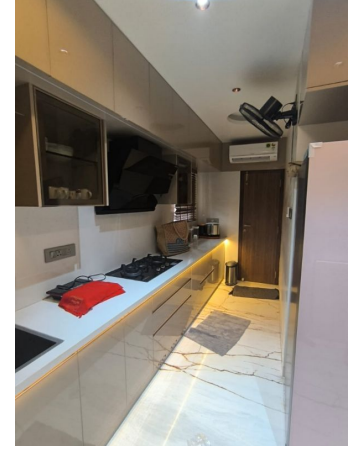
Residential Project - Mogappair Residence, Chennai



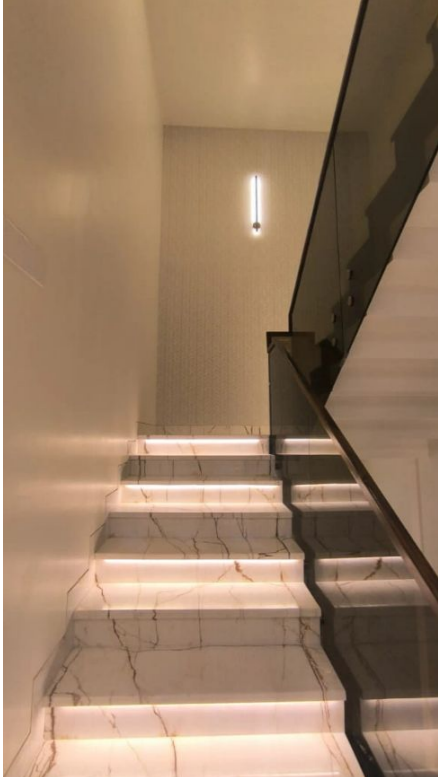
Residential Project - Mogappair Residence, Chennai



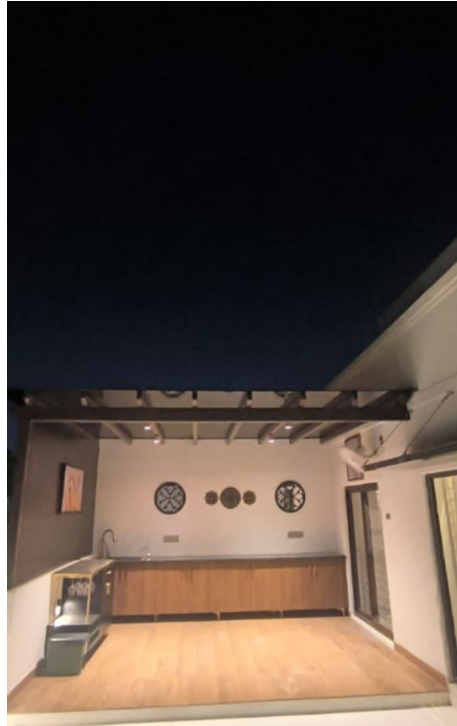
Residential Project - Mogappair Residence, Chennai (site Picture)



Residential Project - Mogappair Residence, Chennai (site Picture)



Residential Project - Mogappair Residence, Chennai (site Picture)



Residential Project - Star Health Office, Chennai



Specs - Ground Floor
Construction - SBM Constructions
Architect, Interior Design - MRA Architects



Residential Project - Murali Residence, Chennai

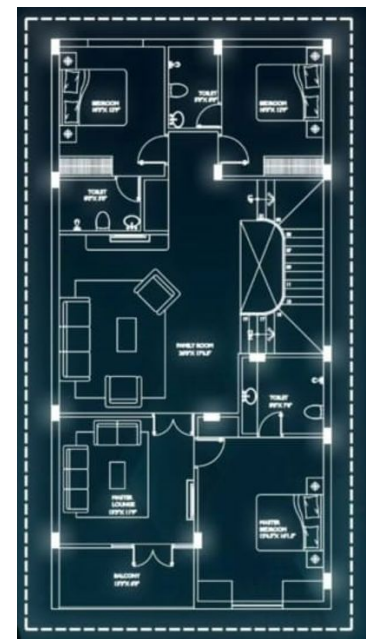


Specs - Ground + 2 Floors, 3 Bedroom bungalow

Timeline - 1 year (Design and construction)

Construction - SBM Construction

Architect, Interior Design - MRA Architects



Residential Project - Murali Residence, Chennai



Residential Project - Murali Residence, Chennai



Residential Project - Murali Residence, Chennai (Site Picture)



Construction & Interior Works - Residential Apartment



Specs - Apartment House

Timeline - 1 Year (Construction)

Construction - SBM Construction

Architect, Interior Design - MRA Architects



Construction & Interior Works - Residential Apartment



Specs - Apartment House

Timeline - 1 Year (Construction)

Construction - SBM Construction

Architect, Interior Design - MRA Architects



Construction & Interior Works - Residential Apartment



Specs - Apartment House

Timeline - 1 Year (Construction)

Construction - SBM Construction

Architect, Interior Design - MRA Architects



JVM CONSTRUCTIONS Presents
SASTHA APARTMENTS

ELEVATION

Site Address :
No.51, 4th Cross Street,
Samundeewari Nagar,
Anakaputhur,
Chennai - 600 070.

Construction & Interior Works - Residential Apartment

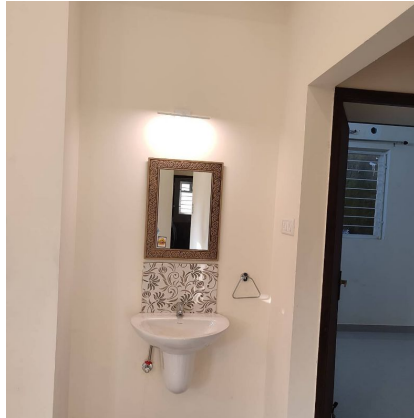


Specs - Residential Apartment

Timeline - 1 Year (Construction)

Construction - SBM Construction

Architect, Interior Design - MRA Architects



Construction & Interior Works - Residential Apartment



Specs - Residential House
Timeline - 1 Year (Construction)
Construction - SBM Construction
Architect, Interior Design - MRA Architects



Construction & Interior Works - Residential Apartment

Specs - Residential Apartment

Timeline - 1 Year (Construction)

Construction - SBM Construction

Architect, Interior Design - MRA Architects



Construction & Interior Works - Residential Apartment @Triplicane



Specs - Residential Apartment
Timeline - 1.5 Year (Construction)
Construction - SBM Construction
Architect, Interior Design - MRA Architects



Construction & Interior Works - Residential Apartment



Specs - Apartment House

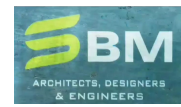
Timeline - 1 Year (Construction)

Construction - SBM Construction

Architect, Interior Design - MRA Architects



CONSTRUCTION OF- BADMINTON COURTS FOR BDHC, CHENNAI



Specs - Badminton Courts

Timeline - 1 Month (Construction)

Construction - SBM Construction



Construction & Interior Works @ Vadapalani



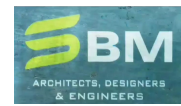
Specs - Dubbing Room

Timeline - 2 Month (Construction)

Construction - SBM Construction



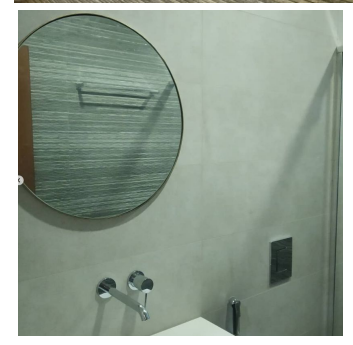
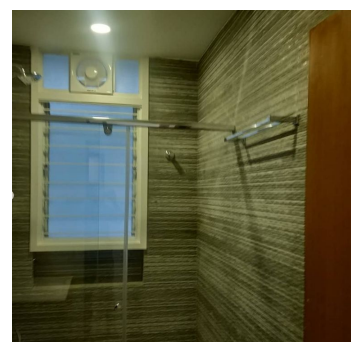
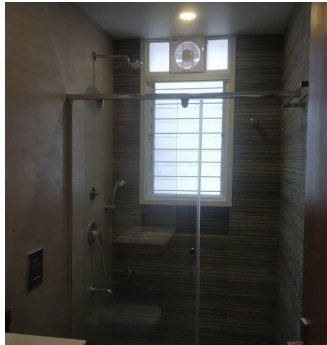
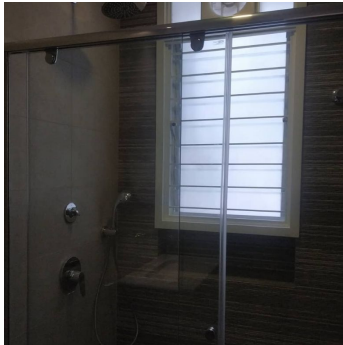
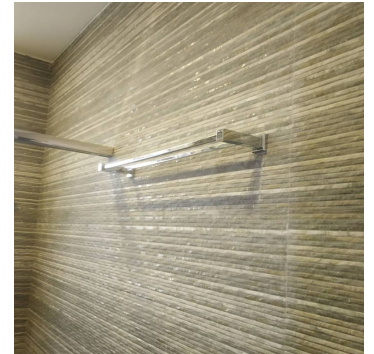
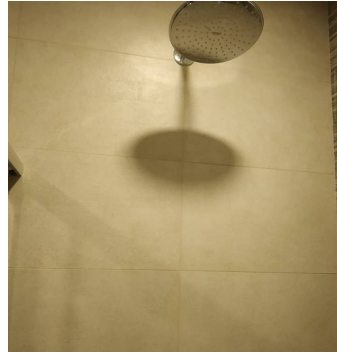
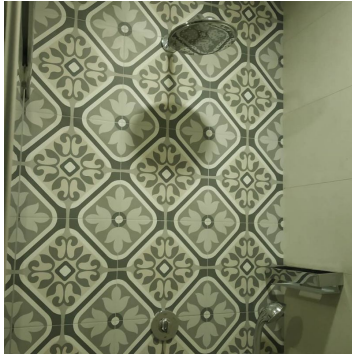
Construction & Interior Works @ Alwarpet



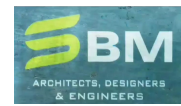
Specs - Toilet & Balcony

Timeline - 2 Month (Construction)

Construction - SBM Construction



Construction & Interior Works @ ECR



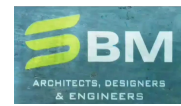
Specs - Facade

Timeline - 2 Month (Construction)

Construction - SBM Construction



Construction & Interior Works @ Crescent Road



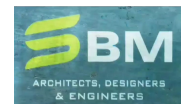
Specs - Interior Work

Timeline - 2 Month (Construction)

Construction - SBM Construction



Construction & Interior Works @ Besant nagar



Specs - Kitchen

Timeline - 2 Month (Construction)

Construction - SBM Construction



Construction & Interior Works @ cenotaph Road



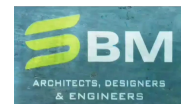
Specs - Interior Work

Timeline - 2 Month (Construction)

Construction - SBM Construction



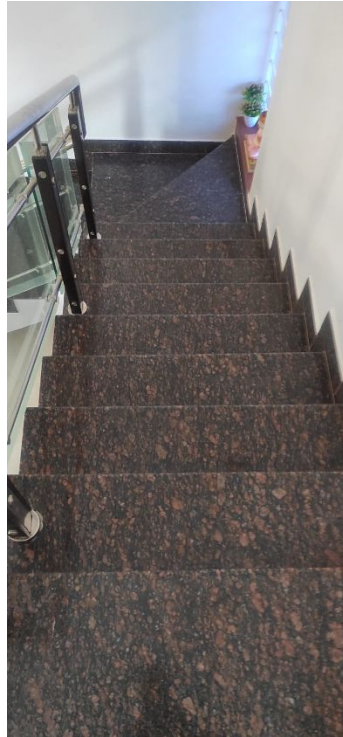
Construction & Interior Works @ VANDALLUR



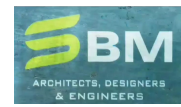
Specs - Interior Work

Timeline - 2 Month (Construction)

Construction - SBM Construction



Construction & Interior Works @ Pazhavanthangal



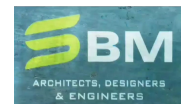
Specs - Interior Work

Timeline - 2 Month (Construction)

Construction - SMB Construction



Construction & Interior Works @ Pazhavanthangal



Specs - Interior Work

Timeline - 2 Month (Construction)

Construction - SBM Construction



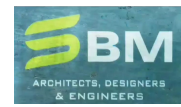
Specs - Interior Work

Timeline - 2 Month (Construction)

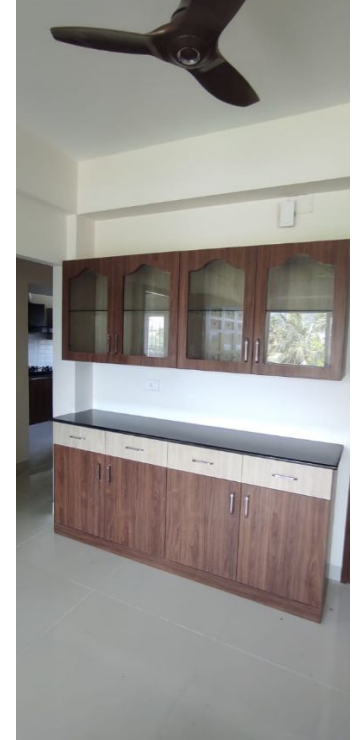
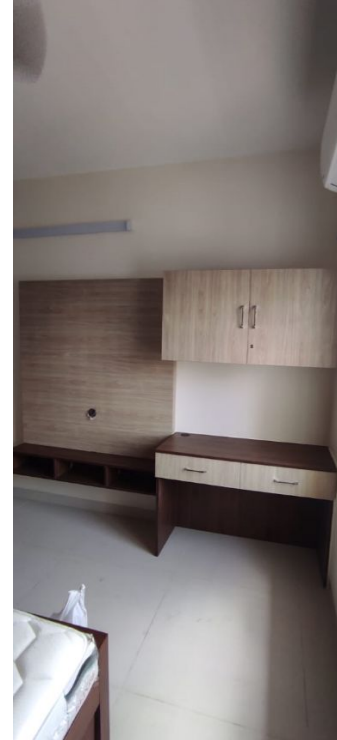
Construction - SBM Construction



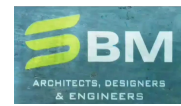
Construction & Interior Works @ Perugudi



Specs - Interior Work
Timeline - 2 Month (Construction)
Construction - SBM Construction



Construction & Interior Works @ Moogappair



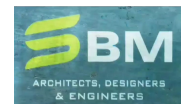
Specs - Interior Work

Timeline - 2 Month (Construction)

Construction - SBM Construction



Construction & Interior Works @ Kundrathur



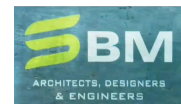
Specs - Interior Work

Timeline - 2 Month (Construction)

Construction - SBM Construction



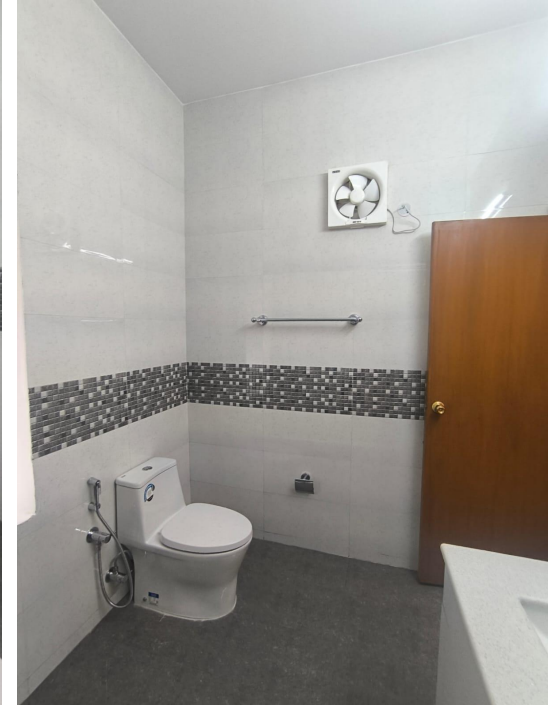
Construction & Interior Works @ HOUSE BOAT CLUB



Specs - Interior Work

Timeline - 2 Month (Construction)

Construction - SBM Construction



Construction & Interior Works @ BOAT CLUB



Specs - Interior Work - US CONSULTANT HOUSE
Timeline - 2 Month (Construction)
Construction - SBM Construction



Construction & Interior Works @Besant nagar



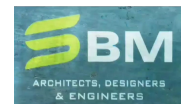
Specs - Interior Work

Timeline - 2 Month (Construction)

Construction - SBM Construction



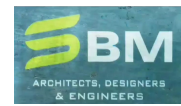
Construction & Interior Works @Besant nagar



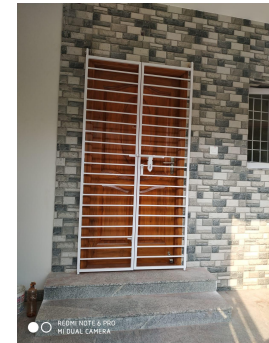
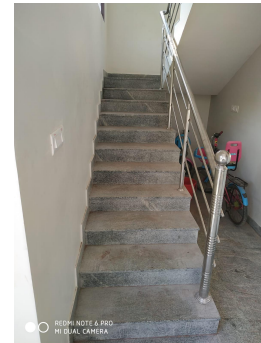
Specs - Interior Work
Timeline - 2 Month (Construction)
Construction - SBM Construction



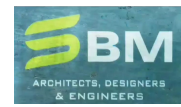
Construction & Interior Works @ Avadi



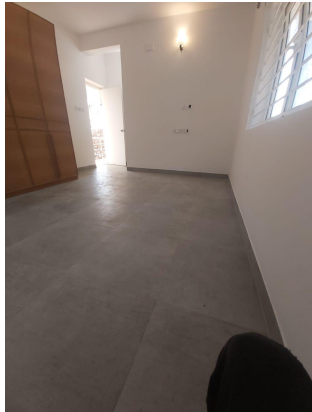
Specs - Interior Work
Timeline - 2 Month (Construction)
Construction - SBM Construction



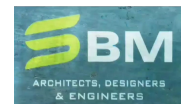
Construction & Interior Works @ Kelambakkam



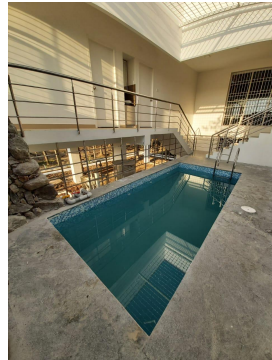
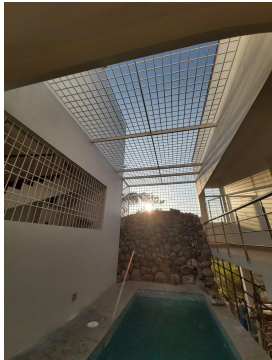
Specs - Interior Work
Timeline - 2 Month (Construction)
Construction - SBM Construction



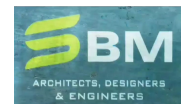
Construction & Interior Works @ Kelambakkam



Specs - Interior Work
Timeline - 2 Month (Construction)
Construction - SBM Construction



Construction & Interior Works @ Poes garden



Specs - Interior Work

Timeline - 2 Month (Construction)

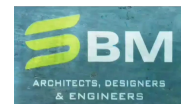
Construction - SBM Construction



Specs - Interior Work - Star health Insurance
Timeline - 2 Month (Construction)
Construction - SBM Construction



Construction & Interior Works @ BESANT NAGAR



Specs - Interior Work

Timeline - 2 Month (Construction)

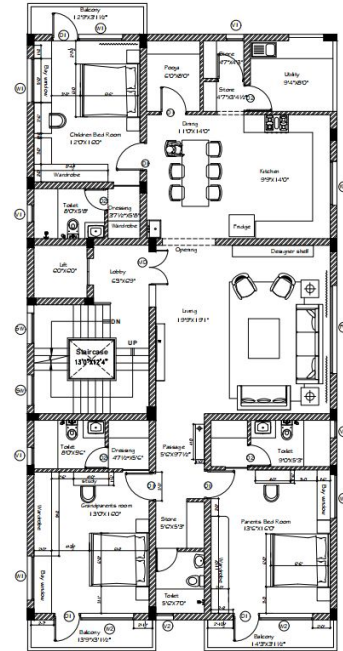
Construction - SBM Construction



Residential Project - Sanjay Patel Residence, Chennai



Specs - Ground + 2 Floors, 3 Bedroom bungalow
DESIGNING AND CO ORDINATION BY
Architect, Interior Design - MRA Architects



Residential Project - Sanjay Patel Residence, Chennai



Residential Project - Sanjay Patel Residence, Chennai



Residential Project - Sanjay Patel Residence, Chennai



Residential Project - KG Residence, Chennai



Specs - Ground + 2 Floors, 3 Bedroom bungalow
Timeline - 1 year (Design and co ordination)
Architect, Interior Design - MRA Architects



12.19M WIDE G.D.NAIDU ROAD

18.29M WIDE RACE COURSE ROAD



Residential Project - KG Residence, Chennai



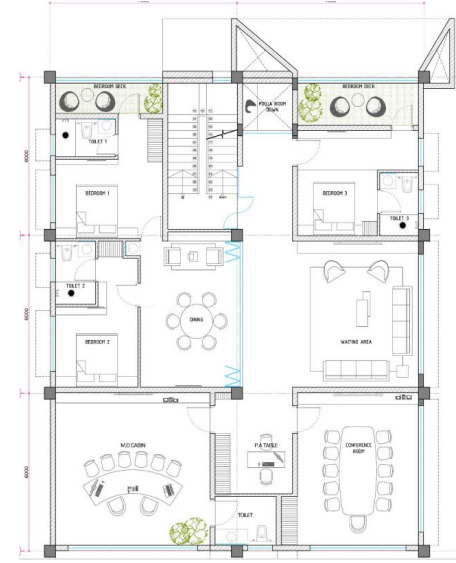
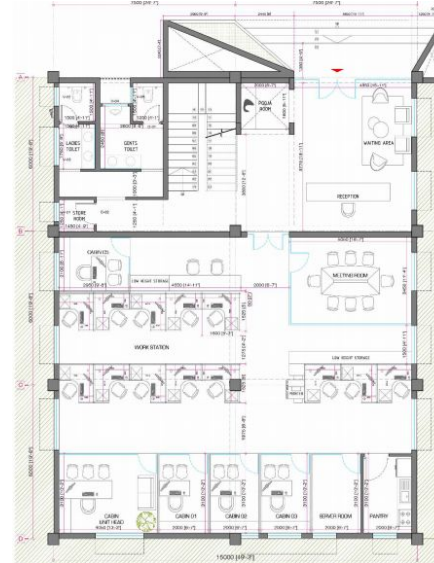
Commercial Project - Dalvcot, Vizag



Specs - Ground + 1 Floors

Timeline - 1 year (Design and construction)

Architect, Interior Design - MRA Architects



Commercial Project - Dalvcot, Vizag



Commercial Project - Dalvcot, Vizag



Commercial Project - Dalvcot, Vizag



Restaurant Project - Haldirams



Location - Mumbai T1, Seawood mall, Kolhapur, Surat

Timeline - 2-3 months for each project

Architect, Interior Design - MRA Architects, SMD Architects



Restaurant Project - Haldiram's



Restaurant Project - Haldirams



Restaurant Project - Saffron Sips





Thanks